



VCAM-1 Monoclonal Antibody

Catalog No	YP-Ab-16840
Isotype	IgG
Reactivity	Human
Applications	WB;IHC;IF;ELISA
Gene Name	VCAM1
Protein Name	Vascular cell adhesion protein 1
Immunogen	Purified recombinant fragment of human VCAM-1 expressed in E. Coli.
Specificity	VCAM-1 Monoclonal Antibody detects endogenous levels of VCAM-1 protein.
Formulation	Ascitic fluid containing 0.03% sodium azide,0.5% BSA, 50%glycerol.
Source	Monoclonal, Mouse
Purification	Affinity purification
Dilution	WB: 1/500 - 1/2000. IHC: 1/200 - 1/1000. ELISA: 1/10000.. IF 1:50-200
Concentration	1 mg/ml
Purity	≥90%
Storage Stability	-20°C/1 year
Synonyms	VCAM1; L1CAM; Vascular cell adhesion protein 1; V-CAM 1; VCAM-1; INCAM-100; CD antigen CD106
Observed Band	
Cell Pathway	Membrane; Single-pass type I membrane protein.
Tissue Specificity	Expressed on inflamed vascular endothelium, as well as on macrophage-like and dendritic cell types in both normal and inflamed tissue.
Function	alternative products:Additional isoforms seem to exist,disease:May play an important role in the genesis of atherosclerosis and rheumatoid arthritis.,domain:Either the first or the fourth Ig-like C2-type domain is required for VLA4-dependent cell adhesion.,function:Important in cell-cell recognition. Appears to function in leukocyte-endothelial cell adhesion. Interacts with the beta-1 integrin VLA4 on leukocytes, and mediates both adhesion and signal transduction. The VCAM1/VLA4 interaction may play a pathophysiologic role both in immune responses and in leukocyte emigration to sites of inflammation.,induction:By cytokines (e.g. IL-1, TNF-alpha),,online information:VCAM-1,online information:VCAM1 entry,PTM:Sialoglycoprotein.,similarity:Contains 7 Ig-like C2-type (immunoglobulin-like) domains.,subunit:Binds to ECMV-D capsid proteins and acts as a receptor for this virus.,tissue specificit
Background	This gene is a member of the Ig superfamily and encodes a cell surface sialoglycoprotein expressed by cytokine-activated endothelium. This type I



membrane protein mediates leukocyte-endothelial cell adhesion and signal transduction, and may play a role in the development of atherosclerosis and rheumatoid arthritis. Three alternatively spliced transcripts encoding different isoforms have been described for this gene. [provided by RefSeq, Dec 2010],

matters needing attention

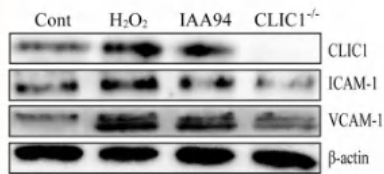
Avoid repeated freezing and thawing!

Usage suggestions

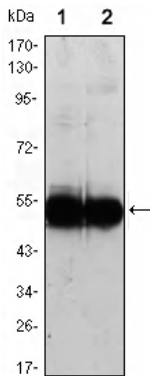
This product can be used in immunological reaction related experiments. For more information, please consult technical personnel.

Products Images

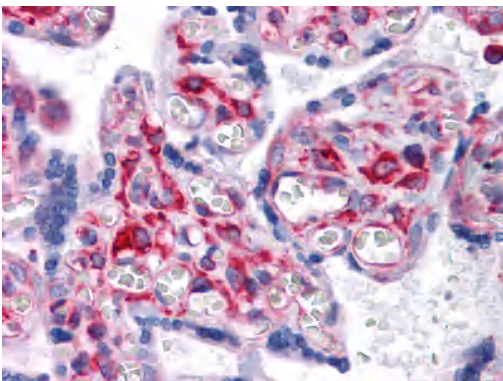
C



Xu, Yingling, et al. "CLIC1 inhibition attenuates vascular inflammation, oxidative stress, and endothelial injury." *PloS one* 11.11 (2016): e0166790.



Western Blot analysis using VCAM-1 Monoclonal Antibody against HUVEC (1) and EC (2) cell lysate.



Immunohistochemistry analysis of paraffin-embedded human Placenta tissues with AEC staining using VCAM-1 Monoclonal Antibody.